

FOR LEASE

1405 DOUGLAS ST

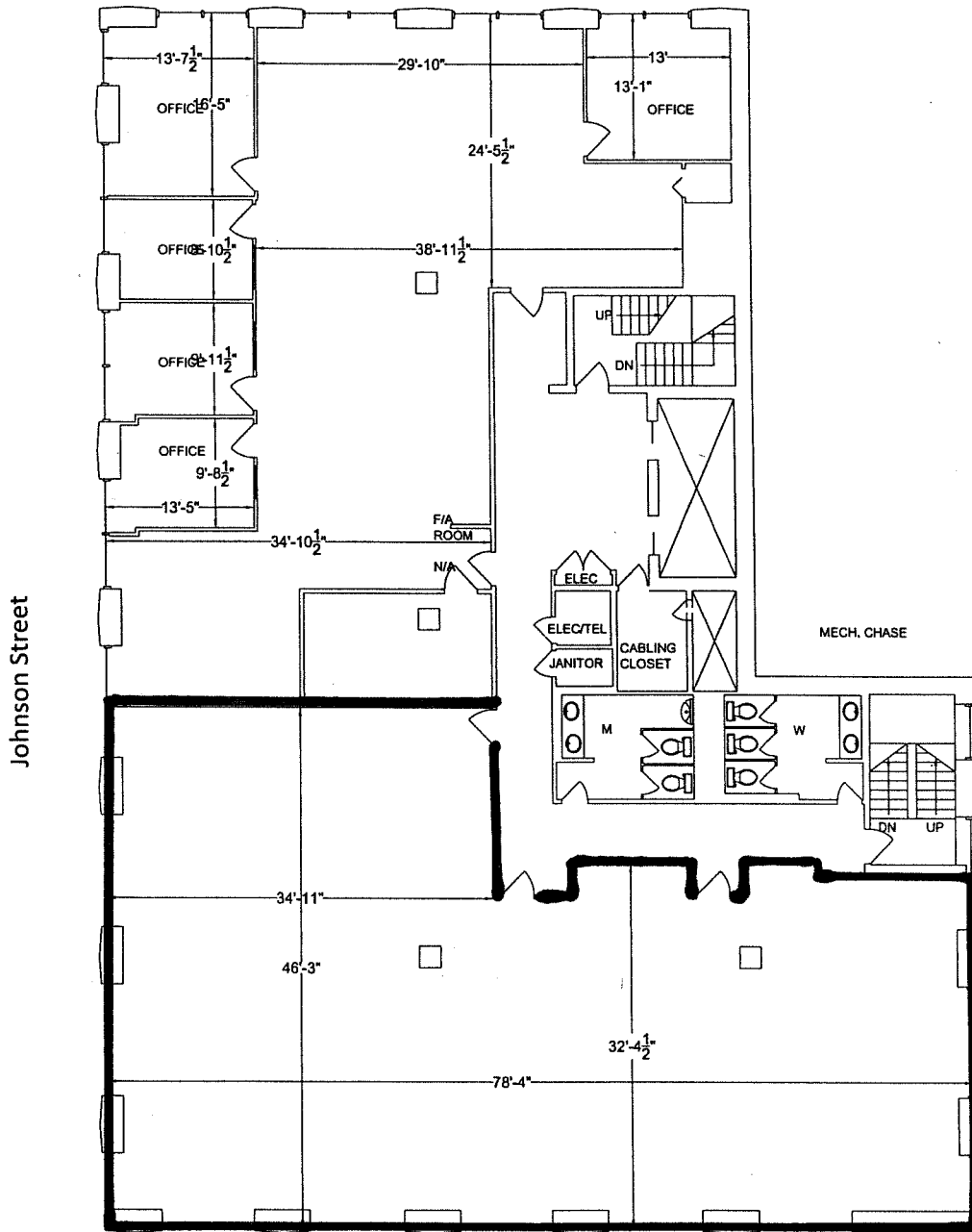
VICTORIA, BC

Space Type:	Office/Retail
Total Space Available:	3,816 square feet, second floor
Building Size:	42,000 square feet, 6 storeys
Date Available:	May 2012
Lease Rate:	\$16.00 per square foot per annum
Operating Costs & Taxes (2012)	\$12.61 per square foot Includes utilities and janitorial
Zoning:	CA-4, Central Area Commercial District
Property Description	Multi-tenant 6 storey office building in prime location downtown Victoria <ul style="list-style-type: none">• Building amenities include exercise room, bicycle storage and showers• BOMA BESt rated for energy efficiency and sustainable management practices
Contact:	Wayne Ford, CCIM Jawl Properties Ltd. Direct Line: 250-414-4180 Cell: 250-889-0644 Courtesy to Brokers

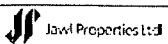


2ND FLOOR

Douglas Street



DEMISING WALLS UPDATED SEPT 07
MEASURED OCT 03



**SUITE 100 - 3350 DOUGLAS
VICTORIA, BC V8Z 3L1
TEL: 475-0338**

1405 DOUGLAS ST.
VICTORIA BC

2ND FLOOR

FLOOR PLAN

07-1123

9 SEPT 07

1/16" = 1'0"



MEASURE MASTERS
VANCOUVER ISLAND - COMMERCIAL
3034 WESTDOWNE ROAD
VICTORIA BC V8R 5G2
TEL 250 472 2653 FAX 250 472 2683