



**Jawl Properties Ltd.**

## **For Lease - 1517 Douglas Street, Victoria, BC**

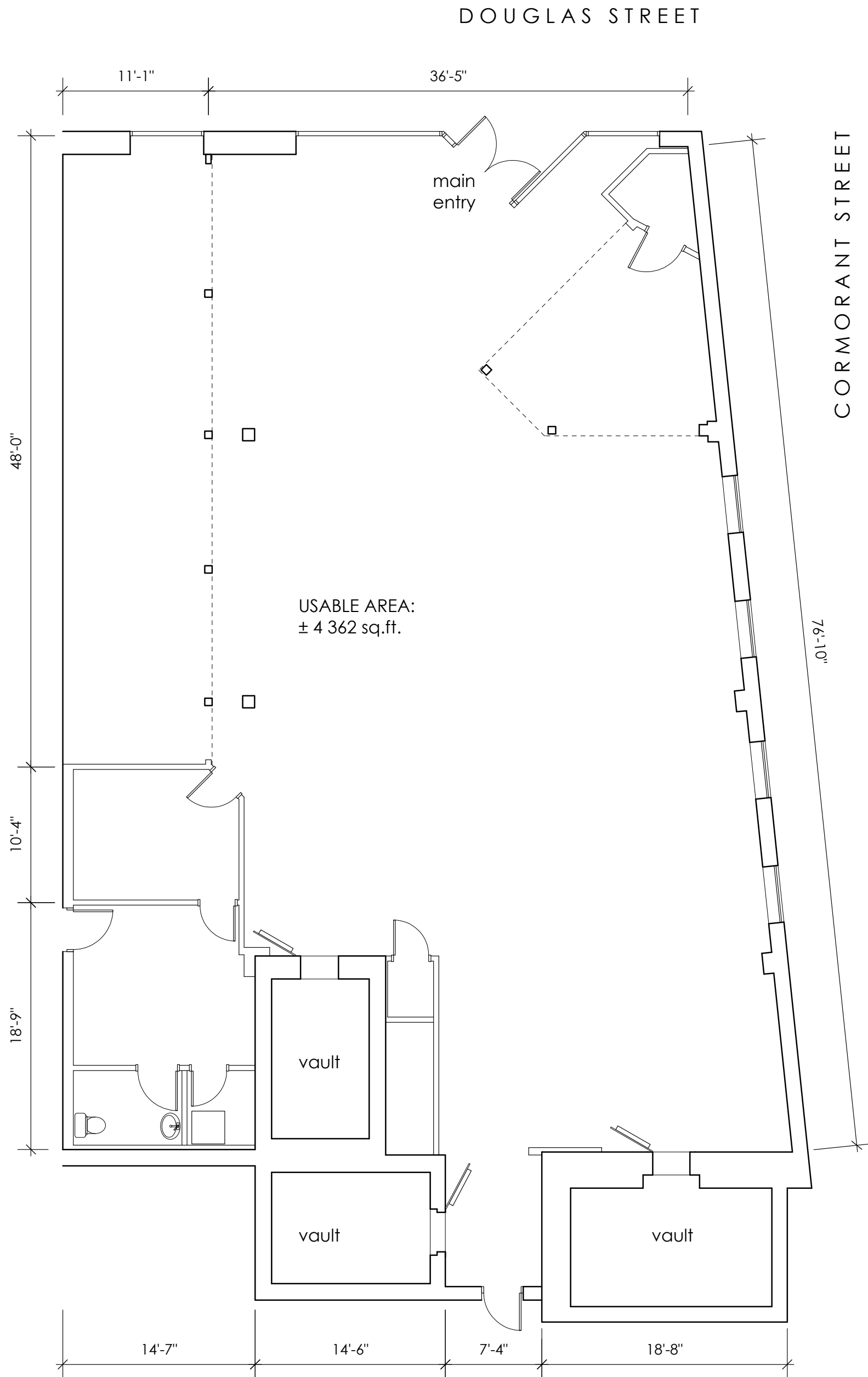
<b>Space Type:</b>	Retail/Office
<b>Total Space Available:</b>	3,600 square feet – Street Level
<b>Date Available:</b>	Immediate
<b>Lease Rate:</b>	\$10.00 net per square foot
<b>Operating Costs &amp; Taxes (2011):</b>	\$9.50 per square foot Plus janitorial
<b>Zoning:</b>	CA-3 Central Area Commercial
<b>Parking:</b>	On-site surface parking stalls available and in close proximity to city parkades
<b>Property Description:</b>	High profile retail/office space on the Douglas St corridor directly across from Victoria's City Hall.

### **For further information regarding leasing opportunities please contact:**

Wayne Ford, CCIM, Jawl Properties Ltd.  
Direct : 250-414-4180; Cell: 250-889-0644

### **Courtesy to Brokers**





# 1517 DOUGLAS STREET

## Floor Plan

note: all dimensions and area claculations are approximate